

NORTHEAST.EDU

2025

ANNUAL REPORT



Northeast Community College is
dedicated to the success of students
and the region it serves.



Accreditation

Northeast Community College is accredited by the Higher Learning Commission (hlcommission.org), an institutional accreditation agency recognized by the U.S. Department of Education. Northeast can award two-year AA, AS, AAS, and Associate in Nursing degrees; one-year diplomas; and certificates. The Higher Learning Commission is located at 230 North LaSalle Street, Suite 7-500, Chicago, IL, 60604. The office can be contacted by calling (800) 621-7440 or (312) 263-0456. The College is also approved by the Nebraska State Department of Education.

Service Area

Northeast Community College's service area consists of 20 counties in northeast and north central Nebraska with a total population of approximately 160,000. The district is nearly 200 miles in length and covers approximately 14,400 square miles. The main campus is located in Norfolk, Nebraska, which has a population of approximately 25,000. Northeast has Extended Campus locations in O'Neill, South Sioux City, and West Point.

Northeast Community College is a member of the National Association of Colleges and Employers (NACE) and complies with the "Professional Standards for College and University Career Services" adopted by the Association.

Northeast Community College does not discriminate on the basis of race, color, gender, religion, national or ethnic origin, military veteran status, political affiliation, marital or family status, age, disability, sexual orientation, gender expression or identity in education programs, admissions policies, employment policies, financial aid or other College administered programs and activities. It is the intent of Northeast Community College to comply with both the letter and the spirit of the law in making certain discrimination does not exist in its policies, regulations and operations. Inquiries may be addressed to the Northeast Compliance Officer for Title IX, ADA, Section 504; Vice President of Human Resources, 801 East Benjamin Avenue, P.O. Box 469, Norfolk, NE 68702-0469; phone: 402-844-7046; email: complianceofficer@northeast.edu; or mail: office for Civil Rights, U.S. Department of Education, One Petticoat Lane, 1010 Walnut Street, 3rd Floor, Suite 320, Kansas City, MO 64106.

Index

PAGES

Institutional Report

4-23

Includes institutional highlights, information about programming and services, and enVISION Strategic Plan updates.

Graduate Report

24-35

Includes first destination survey results, graduate statistics, continuing education institutions, and employers.

Board of Governors

Del Ames, *Neligh*

Julie Robinson, *Norfolk*

Steve Anderson, *Concord*

Jeff Scherer, *Beemer*

Diane Davies, *Pilger*

Nicole Sedlacek, *O'Neill*

Donovan Ellis, *Pierce*

Carol Sibbel, *O'Neill*

Dr. Terry Nelson, *West Point*

Pat Wojcik, *South Sioux City*

Dirk Petersen, *Norfolk*



Greetings,

As we reflect on the past year, I am proud to present the 2025 Annual Report. This report captures the collective efforts of our employees and students in advancing the mission of Northeast Community College to empower learners and strengthen communities.

Our commitment to excellence is evident in the data and stories shared throughout this report. From continued growth in dual credit enrollment and customized workforce training to graduation rates more than 23% higher than the national average, we are seeing the impact of our strategic initiatives across every corner of our 20-county service area.

We remain focused on access to education, student success, and innovation. Whether through expanded early college opportunities, targeted support for first-generation students, or the integration of new technologies and learning spaces, Northeast continues to evolve to meet the needs of today's learners and tomorrow's workforce.

Thank you to our faculty and staff for your dedication, and to our students for your resilience and ambition. Together, we are building a future rooted in opportunity, access, and achievement.

Sincerely,

A handwritten signature in black ink that reads "Leah A. Barrett". The script is fluid and cursive, with the first name "Leah" being the most prominent.

Leah A. Barrett, Ed.D.

President, Northeast Community College

Fast Facts, Lasting Impact

Each achievement, each milestone, each number represents a step forward in our commitment to transform lives and strengthen communities.



14,179

total number of students

99%

of graduates are employed
or continuing education

24

average student age

30,680

number of alumni
through May 2025

53%

of Northeast students
are first-generation

78.3%

of degree-seeking students
received financial aid

650

acres of farmland

2,696

number of dual
enrollment students

75%

full-time retention rate
(15% above benchmark)

Pathways to Success

When students are guided along pathways, they are more likely to persist semester-to-semester, complete their programs, and move confidently toward their next step with less debt — outcomes that create stronger futures for graduates and stronger communities.

Career Pathways (AAS Degrees)

Agriculture, Food, and Natural Resources

Agribusiness
Agriculture: Mechanized
Agriculture
Agriculture: Urban Agriculture
Agronomy
Animal Science
Diversified Agriculture
Horticulture/Golf Course
Management
Precision Agriculture
Veterinary Technology
Arts and Communication
Graphic Design
Media Arts

Business, Marketing, and Management

Accounting
Business
Health Sciences
Health Information
Management Systems
Nursing (ADN)
Paramedicine
Physical Therapist Assistant
Human Services and Education
Early Childhood Education
Science, Technology, Engineering, and Mathematics (STEM) and Pre-Professional Health
Cisco Networking Academy &
Information Security

Cisco Networking Academy &
System Administration
Cisco Networking Academy &
Technical Services Support
Information Security &
System Administration
Information Security &
Technical Services Support
System Administration &
Technical Services Support
Web & Visual Application
Development & Cisco
Networking Academy
Web & Visual Application
Development &
Information Security

Web & Visual Application
Development & Technical
Services Support

Skilled and Technical Trades

Automotive Technology
Building Construction
Diesel Technology: Agriculture
Diesel Technology: Truck
Drafting: Architectural
Drafting: Structural
Electrical Construction & Control
Electromechanical Technology
Heating, Ventilation, &
Air Conditioning
Utility Line
Wind Energy Technology

Diplomas, Certificates, and Courses

Agriculture, Food, and Natural Resources

Horticulture
Arts and Communication
Media Production
Business, Marketing, and Management
Accounting
Administrative Professional
Business
Business Entrepreneurship
Computer Application Specialist

Health Sciences

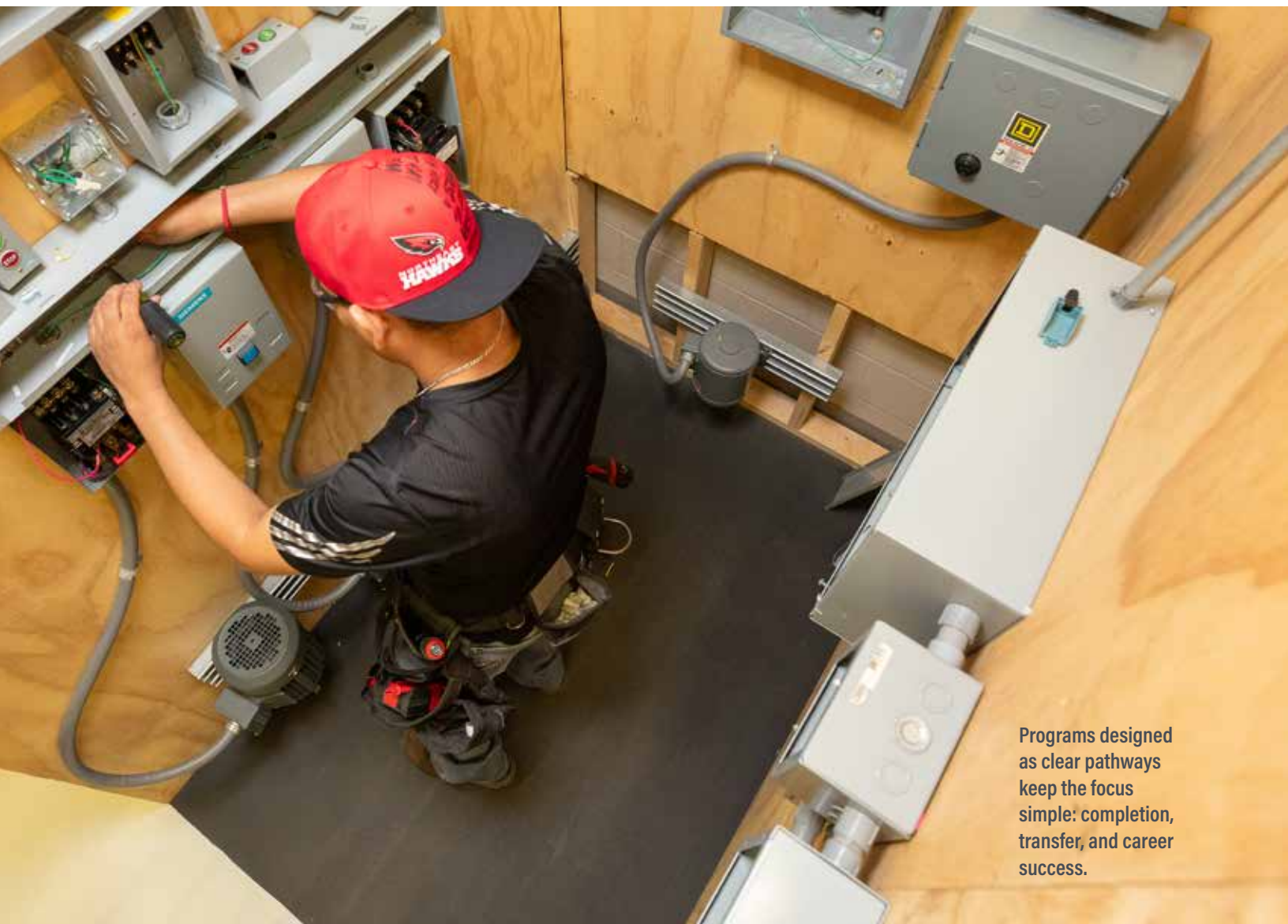
Basic Nurse Aide
Community Healthcare Worker
Emergency Medical Responder/
Technician (EMR/EMT)
Health Information
Management Systems
Medical Billing
Medication Aide
Nursing Practical
Paramedicine
Personal Training
Phlebotomy Technician

Human Services and Education

Drug & Alcohol Counseling
Early Childhood Education
Science, Technology, Engineering, and Mathematics (STEM) and Pre-Professional Health
Cisco Networking Academy
Information Security
Information Technology
System Administration
Technical Services Support
Web & Visual Application
Development

Skilled and Technical Trades

Automotive Light Service
Technician
Automotive Technology
Drafting
Plumbing Technology
Welding
Wind Energy Technology
Truck Driving



Programs designed as clear pathways keep the focus simple: completion, transfer, and career success.

Transfer Pathways (AA / AS Degrees)

Agriculture, Food, and Natural Resources

Agriculture - College Transfer
Natural Resources
Pre-Professional Veterinary
Pre-Veterinary Technology

Arts and Communication


Art
Communication
Graphic Design
Theatre
Writing & Literature

Business, Marketing, and Management

Accounting
Business Administration
Health Sciences
Athletic Training
Exercise Science
Nursing Pre-Professional
Nursing UNMC Transfer
Paramedicine Pre-Professional
Personal Training
Physical Therapy Pre-Professional
Public Health
Recreation
Human Services and Education
Criminal Justice Corrections

Criminal Justice Law Enforcement
Early Childhood Education
Elementary Education
Global Studies
History
Human Services
Paraprofessional Education
Physical Education Teacher Education
Psychology
Secondary Education
Skilled & Technical
Sciences Education
Social Science

Social Work
Science, Technology, Engineering, and Mathematics (STEM) and Pre-Professional Health
Biology
Chemistry
Computer Info Systems
Computer Science
Pre-Engineering
Mathematics
Physics
Pre-Professional Health



Whether on the farm, building homes, or operating a wind turbine, students gain real-world skills for successful careers.

“They helped me get ready for the job by talking with real employers and using that to teach us what they really need.” — Andrew, Class of 2025

What Sets Us Apart — and Moves Us Forward

Northeast is more than a college — it’s a community of students, faculty, staff, and partners working together to strengthen our region. Every success story, every program, and every partnership reflects a shared commitment to moving people and communities forward.

What makes Northeast one of the best community colleges in the nation isn’t just what we do — it’s how we do it.

Hands-on From the Start

Northeast students don’t just learn in classrooms — they build, create, and practice in high-tech labs, simulators, and real-world environments. From welding booths to hospital simulations, lessons are designed to prepare students for what comes next. That preparation extends beyond campus, where learning meets real experience. In 2024–25, students completed 713 credit internships, clinicals, and practicums, while many others gained valuable exposure through job shadowing opportunities and apprenticeships.

Support at Every Step

Northeast’s commitment to student success is more than just words in a mission statement. From expert advisors to dedicated support programs, every effort is focused on helping students stay on track, graduate, and achieve their goals. That commitment shows in the results — Northeast’s three-year graduation rate is 23% higher than the national average.

Community At the Core

Northeast is a regional partner, fueling economic growth and meeting employers and communities where they are. From O’Neill to South Sioux City, West Point to Norfolk, our extended campuses and partnerships make education accessible while strengthening the workforce that drives our region forward.

In O’Neill, the extended campus not only provides daily programming for area learners but also stepped in when the community needed it most — hosting St. Mary’s High School students for three months after an explosion damaged their facilities.

Enrollment at the West Point campus is the highest it’s ever been. Through partnerships with more than 20 local businesses and organizations, students gain real-world experience through internships and job shadowing while local employers connect with the next generation of talent.

In South Sioux City, a strong partnership with South Sioux City Community Schools has fueled record demand for welding and filled the program to capacity.

The main campus in Norfolk remains the anchor — connecting innovation, faculty expertise, and workforce partnerships that extend across the entire region.

Start Strong. Stay Strong.

Northeast helps students begin their journey with confidence and keep moving forward. Early College offers high school students a free head start on college coursework, and support programs like TRIO provide essential resources to help students stay on track for graduation and succeed beyond.

Early College

Northeast Community College's Early College program partners with 107 communities and 123 high schools, serving 2,696 students in 2024-25 — a 7% increase from the previous year.

Navigators

Through the Early College Access Project, Early College Navigators are now located throughout the service area to support high schools and students. The Early College Navigator is central to the College's commitment to expanding access to higher education for high school students throughout the service area. The role involves not only direct student support but also an understanding of the broader institutional goals. The geographical scope of the position, spanning multiple high schools and campuses, allows the Navigators to adapt their approach to the unique environments and needs of each high school they serve. Navigators foster conversations about all aspects of dual enrollment coursework, education beyond high school, student support services both within the college and in the broader community, and career exploration to ensure students' holistic needs are met.

Gateways to Learning

Gateways to Learning, an alternative high school designed to support students who may feel challenges in a traditional setting, was launched in fall 2025 at the College Center in South Sioux City. The partnership between South Sioux City Schools, Wayne State College, and Northeast Community College allows students to take high school classes or college credit courses.

Pathways 2 Tomorrow

The Pathways 2 Tomorrow (P2T) program is a consortium consisting of nine school districts who pool their resources together to provide hands-on, career and technical education for 130 students. P2T provides programming in five career pathways: Building Construction, Welding, Health Science, Education, and Computer Science. The students also have the option to enroll in classes to earn their Commercial Driving License (CDL). The restructuring of the Health Science Pathway led to the largest number of second-year students returning to the P2T program.

Breaking Down Barriers

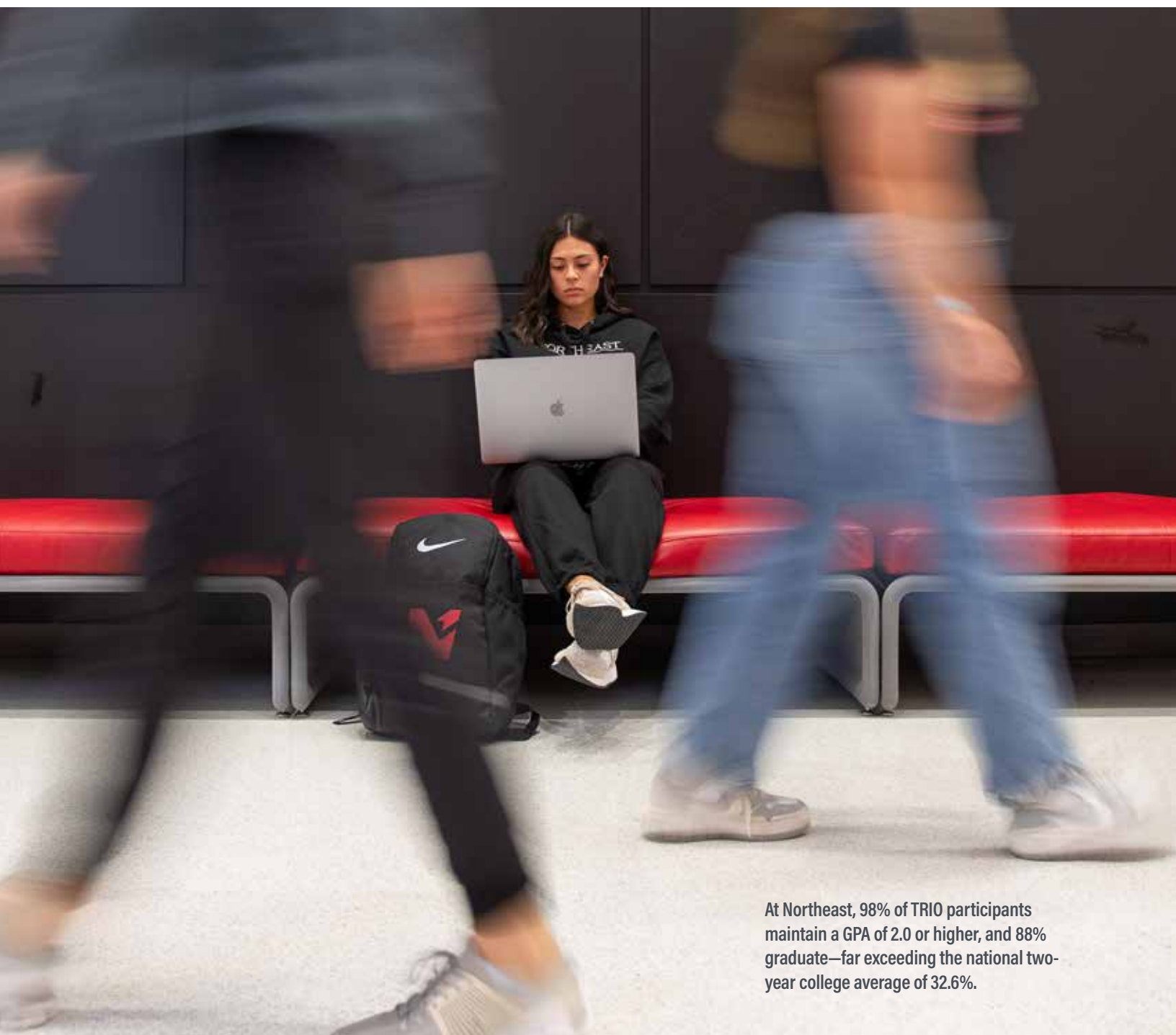
Recognizing that every student's path is different, Northeast provides targeted resources for those who face additional barriers to completion. Northeast utilizes the federally funded TRIO Student Support Services (SSS) program as a vital tool to strengthen student success and retention. More than 70% of Northeast's TRIO students identify as both first-generation and low-income.

Established at Northeast in 2015, the program has supported more than 800 students, providing the personalized guidance and

resources they need to stay on track and achieve their goals. Each year, Northeast TRIO students benefit from tutoring, mentoring, workshops, and one-on-one advising, along with a comprehensive network of academic, financial, and personal support that helps them navigate college, build confidence, and prepare for what's next.

The results speak for themselves. At Northeast, 98% of TRIO participants maintain a GPA of 2.0 or higher, and 88% graduate—far exceeding the national two-year college average of 32.6%.

"I was never a school person, but Northeast changed that. The faculty saw the potential and pushed me to my limits. I am very thankful for my experience." — Jack, Class of 2025



At Northeast, 98% of TRIO participants maintain a GPA of 2.0 or higher, and 88% graduate—far exceeding the national two-year college average of 32.6%.

Value That Opens Doors

Students save thousands of dollars by taking general education courses at Northeast before transferring, or by completing exceptional hands-on training that leads directly into high-wage, high-demand careers. Value is more than affordability — it's an education that pays off in opportunity, career success, and long-term return on investment.

Big results. A fraction of the cost.



2025-26 Tuition: Resident and Border State Residents \$110.00/credit hour Non-resident Students \$153.00/credit hour
Fees: \$21.00/credit hour (dollar amounts based on 2025-2026 academic year) Totals based on 30 credit hours

2025-2026	Nebraska Resident	Border State Resident	Non-Resident
Tuition & Fees	\$3,930.00	\$3,930.00	\$5,220.00
Books & Supplies (estimate)	\$1,356.00	\$1,356.00	\$1,356.00
Room & Board*	\$10,211.00	\$10,211.00	\$10,211.00
TOTAL	\$15,497.00	\$15,497.00	\$16,787.00

Estimated cost of education at Northeast Community College for one year (based on 30 credit hours per year). For more information, contact the Admissions and Registration Department: (800) 348-9033, Ext 7260 or (402) 844-7260. *Average rate of residence halls with unlimited meal plan with 2 additional weekend meals.

During the 2024-2025 academic year, 1,300 scholarship applications were received. More than \$15 million of financial aid was awarded to Northeast students.

41.5%

of degree-seeking
students received
Pell Grants

78.3%

of degree-seeking
Northeast students
received financial aid

90.6%

of first-time, full-time
degree-seeking students received
financial aid (Fall 2024 cohort)

\$15,753,009
Total Financial Aid
2024-2025

\$9,393,457
Federal

\$1,195,498
State

\$1,344,077
Institutional
Scholarships

\$116,201
Private Alternative
Loans

\$2,389,048
Private
Scholarships

\$1,140,718
Northeast Foundation
Scholarships

\$174,011
Agency Assistance and
Reserves/Veterans Benefits

Scholarships: Expanding Access and Removing Barriers

Each year, Northeast scholarships open doors for students by easing financial burdens and providing critical support to help them succeed. One example is the Walter Scott, Jr. Career Pathway Scholarship, funded through the Suzanne & Walter Scott Foundation. This comprehensive program—modeled after TRIO Student Support Services—covers tuition, fees, housing, and meals

for students in high-demand careers. Scholars also benefit from mentorship, leadership development, success programming, paid internships, and job placement support. Now in its second year, the program supports 48 Northeast students as part of a statewide initiative and is already producing retention, completion, and transfer outcomes well above national averages.

Building Momentum. Strengthening Community.

Academic and workforce innovation aren't just ideas — they're how we build futures.

The New Maclay Building

In August 2025, the Maclay Building reopened after a two-year replacement project that transformed one of Northeast's oldest facilities into a hub for modern learning. Built originally in 1971, the structure was demolished and rebuilt on its same footprint. The community's fingerprints are on every step of the journey — from spray-painted messages before demolition to signatures on the final beam lifted into place. Today, the new Maclay Building strengthens the academic core of campus by bringing together fields like accounting, business, English, health information management, and adult education under one roof, creating flexible spaces designed for collaboration, adaptability, and innovation.

Innovation in Action: The iHub

Throughout 2025, the iHub brought innovation directly into our communities through workforce training and partnerships. The iHub hosted 14 summer camps reaching 243 students and introduced more than 1,000 others to robotics through interactive training sessions. It also became Nebraska's first SACA Gold Certified Testing Center through the Smart Automation Certification Alliance—an achievement that allows Northeast to certify individuals in Industry 4.0 skills by assessing both their technical knowledge and practical performance.

The progress made in 2025 sets the stage for the official opening of the iHub in 2026, when Northeast will expand these efforts in a dedicated space designed to accelerate ideas, partnerships, and workforce solutions.

The iHub serves as a regional hub for workforce innovation, offering hands-on training, robotics and STEM programming, and collaborative solutions that connect students, educators, communities, and employers across the college's 20-county region.



iHub Opening
2026: A new home
for innovation,
collaboration, and
community impact.

Opening Doors for Adult Learners

Within the walls of the Maclay building, Adult Education has room to grow, serving more learners with flexible spaces designed for today's needs and tomorrow's opportunities.

In 2024–25, Northeast served 941 students through Adult Education programming across the service area, offering instruction in reading, writing, and mathematics; preparation and testing for a high school credential (GED); English language learning; and Integrated Education and Training programs. These learners represented 96 countries and spoke 85 distinct languages and dialects.

Adult Education is funded through federal grants, with states required to match 25% of the federal contribution. In Nebraska, eight providers served 8,408 individuals in 600 classes statewide this year. For many participants, these classes were the crucial first step toward college, a career, and a better future.

Advancing Agriculture Through Collaboration

Northeast's impact also extends into the fields that sustain our region. The Community College Alliance for Agriculture Advancement (C2A3) is a network of colleges working directly with USDA and local stakeholders to elevate agricultural education. C2A3 has grown from eight founding institutions to 20 engaged colleges, with potential to reach 50 members in the next three years. All founding members have MOUs or cooperative agreements with their state Natural Resource Conservation Service. Nationally, the Alliance has secured six USDA cooperative and competitive agreements totaling nearly \$10 million. This includes funding for applied research, student internships and a leadership program, curriculum development, and professional development for educators. For local learners, this means access to cutting-edge training and applied research. For employers and communities, it means a stronger pipeline of skilled graduates ready to address the challenges and opportunities of modern agriculture.

CDL Training

Northeast's commitment to workforce-driven education is evident in our Commercial Driver's License (CDL) program. In 2024–25, 144 students completed training — many at no tuition cost through the U.S. Department of Labor's Rural Nebraska Increased Access to Truck Driving CDL initiative. This support removes financial barriers and opens doors to an in-demand career. At a time of critical need for professional drivers, Northeast provides accelerated, hands-on training that prepares students to step directly into high-wage, high-demand jobs.

Customized Workforce Training

Partnerships with employers ensure that education translates into impact. Through customized workforce training, Northeast collaborates with local companies like Royal Canin to provide targeted instruction that builds skills, advances careers, and strengthens businesses. These trainings help companies save money by improving efficiency and reducing downtime. When employees grow, businesses thrive and communities prosper.

"This will allow me to give a great life to my family. This program opened the door to a great career." - Kaden, Class of 2025

C2A3 will become a national hub for two-year ag education, developing expertise and regionally specific programming and curriculum that can be replicated and adapted across the country.



enVISION Strategic Plan

Now in its fourth year, the enVISION strategic plan continues to guide Northeast Community College in its commitment to the success of students and the region it serves.

Throughout 2025, listening sessions and collaborative planning efforts have taken place to engage students, employees, and regional stakeholders in meaningful conversation. The college is actively gathering a broad range of insights to inform a renewed

plan that aligns with evolving educational and workforce needs. This forward-looking approach ensures that the next strategic plan will build on past successes while thoughtfully embracing new opportunities for growth, innovation, and lasting impact.



A comprehensive list of all accomplishments in 2024-2025 can be found at northeast.edu/about-us/strategic-plan.

Measurements were identified for the enVISION Strategic Plan to align with the four strategic priorities and to serve as benchmarks for the institution.

Student Pathways To Success

Indicator or Metric	2021-22 Value	2022-23 Value	2023-24 Value	2024-25 Value	Target
PARTICIPATION RATE IN THE SERVICE AREA					
Credit participation rate	3.8%	3.8%	3.9%	3.8%	3.9%
Noncredit participation rate	4.7%	5.0%	4.9%	5.2%	5.1%
CREDIT MOMENTUM					
Completed 12+ college-level credits 1st semester	66.0%	63.6%	66.4%	69.8%	63.0%
Completed 24+ college-level credits 1st year	60.4%	60.5%	61.4%	63.1%	57.0%
College-level credit success rate in 1st year	85.4%	85.4%	86.0%	84.5%	87.0%
PERSISTENCE MOMENTUM					
Fall-to-spring persistence in the 1st year	85.5%	83.0%	83.8%	82.7%	87.15%
RETENTION RATE					
Fall-to-fall retention (full-time)	71%	73%	71%	75%	68-73%
Fall-to-fall retention (part-time)	33%	46%	35%	42%	35-40%
DUAL CREDIT MATRICULATION					
Matriculation to Northeast	29.1%	28.4%	27.3%	28.4%	33.3%
Matriculation to any college	85.2%	85.0%	82.4%	83.0%	92.0%
FOUNDATION DONOR-FUNDED SCHOLARSHIPS					
Average award	\$974	\$977	\$1,251	\$1,702	\$1,000
Total amount awarded	\$525,023	\$595,954	\$749,370	\$1,184,536	\$750,000

Excellence and Innovation in Educational Programs

Indicator or Metric	2021-22 Value	2022-23 Value	2023-24 Value	2024-25 Value	Target
GATEWAY COURSE MOMENTUM					
Completed college-level English & math in the 1st year	36.0%	38.5%	46.0%	49.6%	31.0%
LICENSURE AND CERTIFICATION					
Pass rate	91.1%	91.6%	94.3%	90.3%	90-95%
PLACEMENT RATES AND SATISFACTION					
Graduates employed or continuing education	99.5%	99.0%	99.0%	99.0%	99.0%
Graduates employed in service area	58%	52%	54%	52%	58-63%
Employed in jobs related to program	88%	90%	89%	89%	92%
Employer satisfaction with graduates	90.6%	91.9%	92.2%	91.5%	90-95%
ANNUAL FEDERAL GRANTS					
Expended funds	\$1,400,370	\$1,973,310	\$9,165,817	\$8,325,306	\$1,709,310
ARPA portion of total		\$24,480	\$6,907,912	\$4,998,117	

Definitions for each measurement can be found at northeast.edu/about-us/strategic-plan/strategic-measurements.

Rewarding and Inspirational Place to Work

Indicator or Metric	2021-22 Value	2022-23 Value	2023-24 Value	2024-25 Value	Target
EMPLOYEE SATISFACTION AND RETENTION					
Employee experience score	–	–	25.3	25.2	30.0
Continued employment with Northeast Community College	–	–	78%	82%	80%
COLLEGE ENGAGEMENT DRIVERS					
Culture/student focus	–	–	85%	84%	85%
Supervisor relationships	–	–	70%	70%	71%
Employee empowerment	–	–	71%	71%	72%
CONTROLLABLE TURNOVER	7.8%	6.0%	5.9%	5.1%	<8%

Effective Resource Management

Indicator or Metric	2021-22 Value	2022-23 Value	2023-24 Value	2024-25 Value	Target
Foundation total assets	\$44,909,897	\$46,259,354	\$51,496,753	\$58,113,173	\$50,000,000
Instructional expenses as a % of total expenditures	41%	42%	46%	43%	44%
Higher Learning Commission composite financial index	6.83	7.65	7.82	7.92	3.0 To 8.0

Institutional Benchmarks

	2021-22 Value	2022-23 Value	2023-24 Value	2024-25 Value
Degree-seeking	2,905	2,863	2,816	2,759
Non-degree seeking	3,731	3,747	4,011	4,283
Total enrollment	6,636	6,610	6,827	7,042
	2021-22 Value	2022-23 Value	2023-24 Value	2024-25 Value
Noncredit enrollment	6,439	7,137	6,821	7,137
Dual credit enrollment	1,852	2,004	2,515	2,696
Annual degrees and certificates awarded	920	1,021	1,024	1,085
Three-year graduation rate	52%	51%	56%	56%
Six-year graduation rate	57%	57%	52%	54%
Three-year success rate (transfer/graduation)	67%	66%	67%	68%
Total financial aid awarded	\$14,040,211	\$14,968,127	\$15,428,325	\$15,753,009

These Are Our Students

Total Annual Enrollment

Credit	7,042
Noncredit	7,137
Total	14,179
FTE	3,007
2024-2025	

Fall Enrollment Status

Full-time	33%
Part-time	67%
Fall 2024	

Student Type

Degree-seeking	42%
Early College	37%
Non-degree Seeking	21%
Fall 2024	

Race/Ethnicity

Caucasian/Non-Hispanic	76%
Black, Indigenous and People of Color	17%
Unknown	5%
International Students	2%
Fall 2024	

53%

First-generation degree-seeking students, neither parent having acquired a bachelor's degree

Student Gender

Female	47%
Male	53%
Fall 2024	

Age

24 and under	76%
25 and over	24%
Average Age	24
Fall 2024	

Transfer/CTE

Academic Transfer	49%
Career and Technical Education	51%
Fall 2024	

Retention Rate (Fall 2023 cohort, Fall 2024 returning)

75%

Northeast's Full-time, Degree-seeking Retention Rate

65%

National Full-time, Degree-seeking Retention Rate for Public, Two-year Institutions

42%

Northeast's Part-time, Degree-seeking Retention Rate

44%

National Part-time, Degree-seeking Retention Rate for Public, Two-year Institutions

National Honors. Local Pride.

Every recognition we celebrate — from the Aspen Institute's ranking Northeast among the nation's best to student and faculty awards and national championships — reflects something bigger than a plaque or a medal. At Northeast, recognition is about the collective spirit of students, faculty, staff, and community members who believe in what's possible — and make it happen. It's about being inspired to reach new heights academically, athletically, professionally, and personally. It's proof that when one Hawk soars, we all rise.

Faculty Who Inspire

Our instructors don't just prepare students for tests — they prepare them for life. Their national teaching awards and professional recognitions confirm what our students already know: Northeast faculty are mentors who change the trajectory of lives and careers.

This year, Brandon Keller received two prestigious honors from the Association of Community College Trustees (ACCT): the Western Region Faculty Award and the National Faculty Member of the

Year. These awards recognize exceptional teaching excellence and significant impact on student success.

"Mr. Keller puts students' success first and is dedicated to personal growth. His work on campus and in communities supports the development of people across the region," Charlene Widener, Northeast Vice President of Educational Services.

Excellence on National Stages

Championships at Northeast are earned in classrooms, labs, and studios where students put in the work to become some of the best in the country. In June, 16 students qualified for the SkillsUSA National competition in Atlanta, carrying forward a proud tradition of success. Among the achievements, a team of students captured a national championship in the Television/Video Production competition, spotlighting the strength of our communications programs on a national stage.

At the 2025 North American Colleges and Teachers of Agriculture (NACTA) Judging Conference, Northeast placed first overall in the Agribusiness Contest and finished third in the national sweepstakes for two-year colleges.

Several Northeast students earned top ten honors in their events at the Future Business Leaders of America (FBLA) Collegiate National Leadership Conference. Northeast students consistently showcase not only technical expertise but also the leadership, confidence, and creativity that set them apart.

More Than A Game

That same spirit of excellence thrives in athletics. In 2024, the Northeast Hawks men's soccer team captured the NJCAA DII National Championship — the first national title in program history.

"Their [Northeast Community College Men's Soccer Team and Coach Adam Potter's] work is a testament to the work and character of our national champions, as well as the entire Northeast community," Mike Flood, U.S. 1st Congressional District Representative.

Athletic achievement at Northeast is matched by academic success. With a combined student-athlete GPA above national averages and multiple academic all-region honorees, our athletes prove that determination, focus, and teamwork extend far beyond the scoreboard.

Excellence in athletics begins with the vision and mentorship of exceptional coaches. Northeast's Head Women's Basketball Coach Matt Svehla was recognized as one of the first-ever recipients of the NJCAA Coaches Legacy Award, honoring the all-time winningest coaches in NJCAA history.

"Northeast helped me believe I can do anything I put my mind to."
— James, Class of 2025



Coach Potter and Coach Coppolecchia named United Soccer Coaches 2024 Junior College Men's DII National Staff of the Year. Edouard Nys named United Soccer Coaches 2024 Junior College Men's DII Player of the Year.

Northeast equips graduates with skills employers need, preparing them for career success and continued education.



From Northeast To The Workforce

Career Services plays a pivotal role in bridging academics and real-world employment, offering students valuable resources and guidance.

The following services are provided by Career Services for students and alumni of Northeast Community College:

- Provide one-on-one advisement and personal attention to students/alumni as they conduct their job search.
- Locate websites with vacancy notices to specifically meet the needs of students' job search.
- Local, regional, and international jobs posted on Handshake.
- Assist with writing and completing resumes, cover letters, and applications.
- Conduct mock interviews or schedule employers to conduct mock interviews.
- Inform students and alumni of steps in conducting a job search and follow-up techniques.
- Host career fairs to connect students with employers.
- Provide assessments to explore career interests.
- Connect students with employers to conduct job shadows.
- Present workshops on resume/cover letter preparation, job search strategies, interviewing, and dining etiquette.
- Resources related to job search are available online at northeast.edu/career-services.
- Computer room for printing application materials and conducting job search.
- Offer lifetime employment assistance to alumni at no charge.

“Through earning my degree, Northeast has given me the confidence to continue to move forward and has given me a feeling of self-worth that no one will be able to take away from me.” — Celina, Class of 2025

Graduate Success

Northeast graduate success and the graduates’ contributions to the workforce are paramount priorities for Northeast. By providing accessible and affordable education along with programs that align closely with the needs of the local job market, graduates are equipped with skills sought by employers. Northeast graduates are valuable assets to the region, not only filling crucial roles in various industries but also driving local economic growth and innovation.

The 2024-2025 graduating class has achieved an outstanding 99% success rate, a testament to their dedication and hard work in pursuit of their professional goals. This accomplishment is also a reflection of the exceptional support and teaching provided by our dedicated faculty and staff, who inspire students to learn, explore, and grow. This collaborative effort ensures that our graduates depart with a strong foundation to make a lasting impact in their lives and communities.

99%

of graduates who responded to the 1st Destination Survey are employed or continuing their education.

Number of Awards Distributed to Graduates

351

Associate of Applied
Science Degrees

227

Associate of
Arts Degrees

124

Associate of
Science Degrees

32

Associate of
Nursing Degrees

153

Diplomas

226

Certificates

2025 Northeast's 1st Destination Survey

Through Northeast's 1st Destination Survey, graduates engage with Career Services to share their post-graduate updates. These connections are made through a variety of channels, including personal conversations, classroom visits, phone calls, faculty updates, emails, mailings, texts, and social media, all within the first six months of graduation.

Terri Heggemeyer, Director of Career Services, passionately emphasizes the commitment of Career Services, stating, 'We dedicate ourselves to building connections with our graduates because we care about their future. Witnessing our graduates achieve their goals reaffirms that Northeast Community College is unwavering in its mission.'

919

Total
Graduates

436

Total Career and
Technical Graduates
Employed

36

Total AA and AS
Degree Graduates
Employed

95%

Collection
Rate

Reference NOTES (pg 27 Table)

The graduates in the Not Found and Non-Seeking columns are not included in the percentage calculations.

Wage information has been self-reported by graduates for their first job upon graduation in positions that are related to their program of study.

In some programs, the low number of salaries reported for related positions were statistically insignificant and/or omitted due to confidentiality, so these fields are represented with an asterisk (*).

The National Student Clearinghouse was used to assist in tracking graduates who continued their education.

***AA & AS Degrees** (General Transfer) section includes Academic Transfer, Art, Athletic Training, Behavioral Science, Biology, Chemistry, Education-Elementary, Education-Paraprofessionals, Education-Secondary, English, Exercise Science, General Studies, Human Services, Mathematics, Personal Training, Physical Education-Teacher Education, Pre-Professional Dentistry, Pre-Professional Dietetics, Pre-Professional Engineering, Pre-Professional Medicine, Pre-Professional Mortuary Science, Pre-Professional Nursing, Pre-Professional Nursing-UNMC, Pre-Professional Physical Therapy, Pre-Professional Radiologic Technology, Pre-Professional Surgical Technology, Pre-Professional Veterinary, Pre-Veterinary Technology, Psychology, Social Science, and Social Work.

Programs

Includes AAS, AA, AS, AS, Diplomas, and Certificates

	# of Grads	Employed	Related	Non-Related	Continuing Ed.	Not Found	Non-Seeking	Unemployed	% Related	%Emp/ContEd	Ave. Hr. Wage	High Wage	Low Wage	Job in NE	Job Out of NE
Accounting	14	7	6	1	6	0	1	0	86%	100%	\$20.33	\$25.00	\$18.00	5	2
Administrative Professional	7	5	4	1	1	1	0	0	80%	100%	\$21.60	\$23.19	\$20.00	4	1
Agriculture - Agribusiness	27	24	22	2	1	0	0	2	92%	93%	\$21.94	\$30.00	\$17.00	20	4
Agriculture - Agronomy	12	11	10	1	1	0	0	0	91%	100%	\$25.01	\$28.85	\$20.00	11	0
Agriculture - Animal Science	10	9	5	4	1	0	0	0	56%	100%	\$18.08	\$20.00	\$15.75	9	0
Agriculture - College Transfer	13	1	1	0	11	1	0	0	100%	100%	*	*	*	1	0
Agriculture - Diversified	5	4	4	0	0	1	0	0	100%	100%	*	*	*	4	0
Agriculture - Mechanized	2	2	2	0	0	0	0	0	100%	100%	*	*	*	2	0
Agriculture - Precision	9	8	8	0	1	0	0	0	100%	100%	\$22.41	\$31.25	\$18.00	7	1
Auto Body Repair Technology	9	9	9	0	0	0	0	0	100%	100%	\$19.83	\$26.44	\$15.00	9	0
Automotive Light Service Technician	7	1	1	0	6	0	0	0	100%	100%	*	*	*	1	0
Automotive Technology	27	18	15	3	6	3	0	0	83%	100%	\$20.32	\$27.00	\$15.00	18	0
Building Construction	22	16	15	1	1	5	0	0	94%	100%	\$22.65	\$28.85	\$16.00	15	1
Business	30	22	21	1	6	1	1	0	95%	100%	\$19.87	\$28.85	\$15.50	21	1
Business Administration	50	14	11	3	30	5	1	0	79%	100%	\$22.33	\$29.25	\$18.50	11	3
Community Healthcare Worker	1	0	0	0	1	0	0	0	-	100%	*	*	*	0	0
Criminal Justice	23	9	2	7	10	3	1	0	22%	100%	*	*	*	9	0
Diesel Technology	15	15	14	1	0	0	0	0	93%	100%	\$24.88	\$35.00	\$20.00	15	0
Drafting	22	8	8	0	14	0	0	0	100%	100%	\$20.94	\$25.00	\$19.35	8	0
Drug and Alcohol Counseling	23	17	15	2	5	1	0	0	88%	100%	\$22.99	\$34.62	\$18.00	17	0
Early Childhood	37	30	27	3	7	0	0	0	90%	100%	\$17.00	\$27.97	\$11.54	26	4
Electrical Construction & Control	23	20	19	1	2	1	0	0	95%	100%	\$21.24	\$26.00	\$16.00	20	0
Electromechanical Technology	17	14	13	1	3	0	0	0	93%	100%	\$30.67	\$37.80	\$25.88	14	0
Graphic Design	9	6	3	3	2	0	1	0	50%	100%	*	*	*	6	0
Health Information Management Systems	12	1	1	0	10	1	0	0	100%	100%	*	*	*	1	0
Heating, Ventilation & AC (HVAC)	17	16	16	0	0	0	1	0	100%	100%	\$21.29	\$26.00	\$17.00	15	1
Horticulture & Golf Course Management	11	3	2	1	7	0	1	0	67%	100%	*	*	*	2	1
Information Technology	42	15	10	5	21	4	1	1	67%	98%	\$20.88	\$25.00	\$17.00	15	0
Machining and Manufacturing Automation	1	1	1	0	0	0	0	0	100%	100%	*	*	*	1	0
Media Arts	19	8	6	2	7	2	2	0	75%	100%	\$15.50	\$17.00	\$14.00	7	1
Nursing - Associate Degree (RN)	32	31	31	0	0	1	0	0	100%	100%	\$35.77	\$43.35	\$29.87	28	3
Nursing - Practical (LPN)	39	2	2	0	37	0	0	0	100%	100%	*	*	*	2	0
Paramedic	10	9	9	0	0	0	1	0	100%	100%	*	*	*	9	0
Physical Therapist Assistant	6	5	5	0	0	0	1	0	100%	100%	*	*	*	5	0
Plumbing Technology	9	8	7	1	1	0	0	0	88%	100%	\$19.36	\$25.00	\$16.50	7	1
Utility Line	32	30	28	2	0	1	1	0	93%	100%	\$29.39	\$40.75	\$23.00	23	7
Veterinary Technology	9	9	9	0	0	0	0	0	100%	100%	\$19.33	\$27.00	\$15.00	9	0
Welding	35	23	22	1	9	3	0	0	96%	100%	\$22.68	\$29.50	\$18.50	20	3
Wind Energy Technology	8	5	5	0	3	0	0	0	100%	100%	\$30.46	\$43.27	\$24.05	2	3
TOTAL - Career and Technical	696	436	389	47	210	34	13	3						399	37
*AA & AS Degrees - General/Transfer	223	36	21	15	169	16	2	0							
GRAND TOTAL	919	472	410	62	379	50	15	3						399	37

2025 Northeast Graduates Make Their Mark

Graduates Continuing Education

84%

of Northeast graduates who are continuing their education are doing so at Nebraska colleges.

16%

of Northeast graduates who are continuing their education are doing so at colleges in other states.

Academic Transfer Students (AA and AS Degrees)

82%

of academic transfer students are continuing their education.

18%

of academic transfer students are employed.

Related Employment (Career and Technical Programs)

89%

of employed Career and Technical graduates are working in their field of study.

11%

of employed Career and Technical graduates are working outside their field of study.

Graduates Employed or Continuing Education

55%

of Northeast graduates are employed.

44%

of Northeast graduates are continuing their education.

Only 1% of Northeast graduates are unemployed.

Graduates Continuing Education (379 Graduates)

CONTINUING IN NEBRASKA			
Bellevue University / Bellevue, NE	5	Eastern Kentucky University / Richmond, KY	1
Bryan College of Health Sciences / Lincoln, NE	3	Felician University / Rutherford, NJ	1
Capitol Beauty School / Omaha, NE	1	Georgetown College / Georgetown, KY	1
Chadron State College / Chadron, NE	5	Iowa State University / Ames, IA	2
Clarkson College / Omaha, NE	1	Kansas City Art Institute / Kansas City, MO	2
College of Hair Design / Lincoln, NE	2	Kansas State University / Manhattan, KS	2
Concordia University / Seward, NE	2	King University at Tennessee / Bristol, TN	1
Doane University / Crete, NE	1	Kirkwood Community College / Cedar Rapids, IA	1
Metro Community College / Omaha, NE	4	Louisiana Christian University / Pineville, LA	1
Midland University / Fremont, NE	2	Manchester Metropolitan University / United Kingdom	1
Nebraska Methodist College / Omaha, NE	2	Missouri Southern State University / Joplin, MO	1
Northeast Community College / Norfolk, NE	155	Morningside University / Sioux City, IA	2
Saint Mary's / Omaha, NE	1	Mount Marty University / Yankton, SD	1
Southeast Community College / Lincoln, NE	5	Northern Michigan University / Marquette, MI	2
University of Nebraska at Kearney / Kearney, NE	12	Northwest Iowa Community College / Sheldon, IA	2
University of Nebraska at Lincoln / Lincoln, NE	27	Northwest Missouri State University / Maryville, MO	1
University of Nebraska Medical Center / Omaha, NE	25	Northwestern College / Orange City, IA	1
University of Nebraska at Omaha / Omaha, NE	13	Old Dominion University / Norfolk, VA	1
Wayne State College / Wayne, NE	51	Palm Beach College / Palm Beach, FL	1
York University / York, NE	1	South Dakota State University / Brookings, SD	2
Total Continuing In Nebraska	318	Southeast Technical College / Sioux Falls, SD	1
CONTINUING OUT OF STATE		St Luke's College / Sioux City, IA	3
Arapahoe Community College / Littleton, CO	1	Texas State University / San Marcos, TX	1
Avera Sacred Heart / Yankton, SD	1	University / Spain	1
Baker University / Baldwin City, KS	1	University of Illinois / Chicago, IL	2
Barry University / Miami Shores, FL	1	University of South Dakota / Vermillion, SD	5
Belmont Abbey College / Belmont, NC	1	University of St. Francis / Joliet, IL	1
Black Hills State University / Spearfish, SD	2	University of Tasmania / Australia	1
Briar Cliff University / Sioux City, IA	2	Utah State University / Logan, UT	1
Central Baptist College / Conway, AR	1	Washburn University / Topeka, KS	4
Des Moines Area Community College / Des Moines, IA	1	Western Governors University / Millcreek, UT	1
Dordt University / Sioux Center, IA	1	Western Iowa Tech / Sioux City, IA	1
		Total Continuing Out of State	61
		Total Graduates Continuing Education	379

Where Graduates are Employed in Nebraska

91%

of Northeast graduates are employed in Nebraska

Adams	4	Custer	3	Holt	10	Red Willow	3
Antelope	4	Dakota	10	Howard	2	Rock	1
Boone	6	Dawes	1	Johnson	1	Saline	1
Box Butte	2	Dawson	5	Keith	2	Sarpy	2
Brown	1	Dixon	3	Knox	12	Saunders	4
Buffalo	5	Dodge	8	Lancaster	12	Seward	6
Burt	3	Douglas	21	Madison	129	Sherman	1
Butler	3	Fillmore	1	Merrick	3	Stanton	2
Cedar	17	Furnas	2	Nance	7	Thurston	10
Cherry	3	Gage	1	Nemaha	1	Valley	3
Cheyenne	1	Garfield	2	Otoe	1	Washington	2
Clay	1	Hall	7	Pierce	10	Wayne	12
Colfax	12	Hamilton	3	Platte	40	York	5
Cuming	14	Harlan	2	Polk	3	Total	430

52%

of 2025 graduates are employed in the 20-county service area – **246 total**

Antelope	4	Cedar	17	Holt	10	Rock	1
Boone	6	Cuming	14	Keya Paha	0	Stanton	2
Boyd	0	Dakota	10	Knox	12	Thurston	10
Brown	1	Dixon	3	Madison	129	Wayne	12
Burt	3	Garfield	2	Pierce	10	Wheeler	0

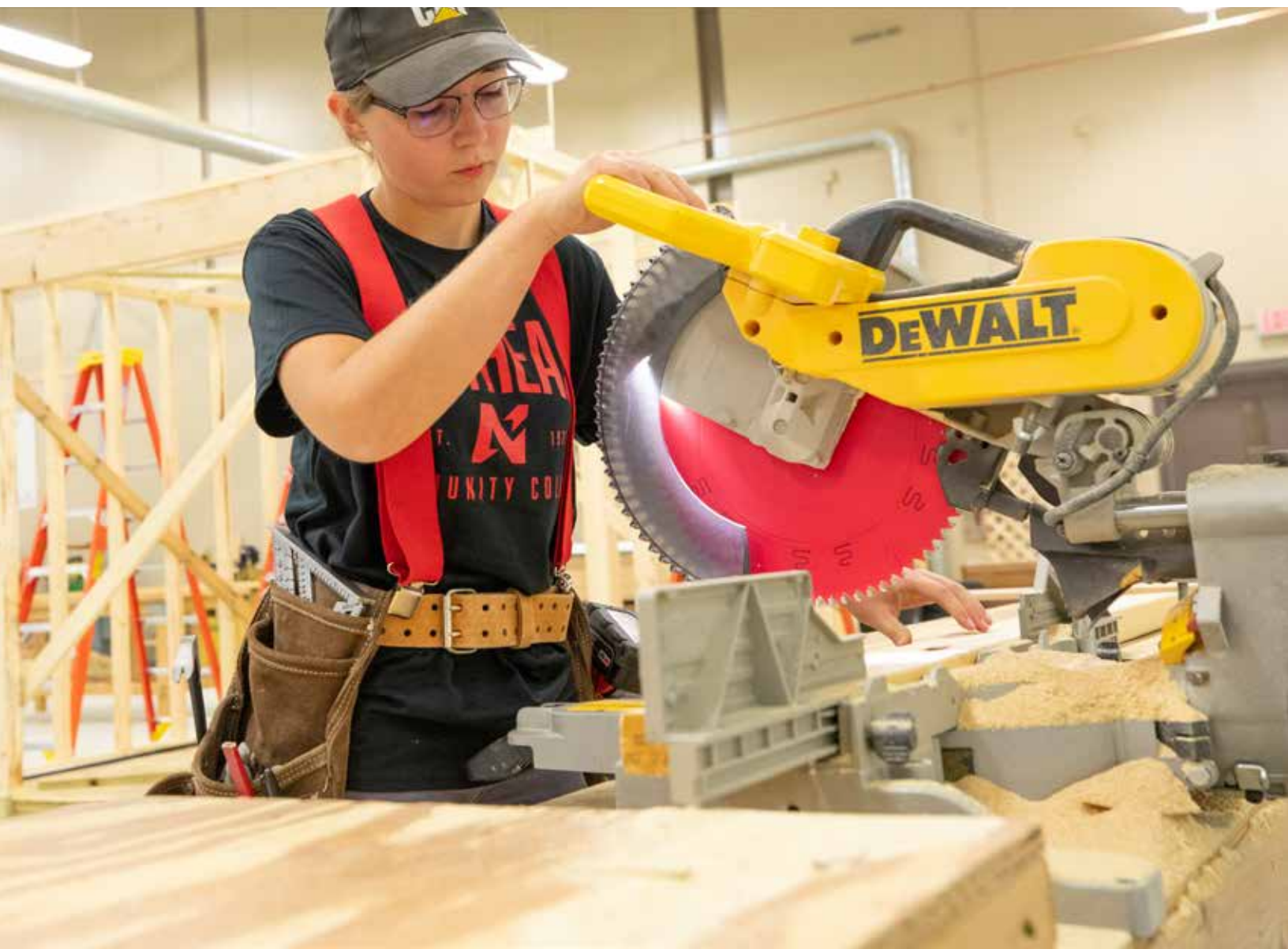
9%

of 2025 graduates are employed out of state – **42 total**

Arizona	1	Illinois	1	Montana	1	Virginia	1
Colorado	1	Kansas	1	North Dakota	1	Wyoming	4
Denmark	2	Minnesota	2	South Dakota	15		
Iowa	8	Missouri	3	Texas	1		

Prior Years' Statistics

	2020	2021	2022	2023	2024	2025
Number of Graduates	860	870	812	893	888	919
Number of Graduates Continuing Education	385	362	353	306	358	379
Total Employed	396	450	416	537	483	472
Total Unemployed	13	4	8	11	9	3
% Employed Related to Program	90%	88%	90%	89%	88%	89%
% Employed in 20-County Area	56%	58%	52%	54%	59%	52%
Employed in NE	91%	90%	87%	90%	91%	91%
% Employed Out of State	9%	10%	13%	10%	9%	9%
Collection Rate	94%	95%	97%	97%	97%	95%
Success Rate: Employed or Continuing Education	98%	99.5%	99%	99%	99%	99%



2024 Employer Evaluation Survey

Paper surveys are distributed to all known employers who have hired Northeast graduates. The survey consists of a skills assessment and overall satisfaction of the employers rating of the Northeast graduate and career program. This survey was conducted in 2025 for the graduates of the 2023-2024 academic year. Of the 335 surveys distributed, 113 were completed for a 34% response rate.

96%

of employers would consider hiring Northeast graduates in the future.

98%

of employers rated Northeast graduates as either excellent or good in their career program. Employers assess on conceptual and technical knowledge, quality of work, oral and written communication, interpersonal and teamwork skills, math, troubleshooting, and behavior.

This survey is conducted by the Northeast Data & Strategic Analytics office.

Northeast Community College Graduates

Accounting - AA, AAS, Certificate / 14

Companies:

Beba's Sourdough & Creations
Elkhorn Valley Bank
Freudenburg & Associates
Great West Casualty
Mid-Nebraska Lutheran Home
Sierra Verde Construction
Speedy Rooter Plumbing

Positions:

Accounts Payable Specialist
Accounting Intern
CNA
Office Administrator
Owner
Policy Support and Review
Teller

Administrative Professional - AA, AAS, Certificate, Diploma / 17

Companies:

Faith Regional Health Services
Family Farm
Insight Financial Planning
Wausa Public Schools
Woods Fuller

Positions:

Assistant Cook
Bookkeeper/Records
Client Service Associate
Clinic Coordinator
Legal Assistant

Agriculture - Agribusiness - AAS / 27

Companies:

Bamble Farms

CHS
Daryl Crook Farms
Double M Ranch
Family Farm
Farm and Ranch Company
Hefty Seed Company
Helena Agri-Enterprises
Herbert Feed & Grain
Kahlandt Farms
Kubota
Lincoln Creek Landscape
Lincoln Premium Poultry
Minnesota Select Sires
Nutrien Ag Solutions
Nutrient Advisors
Pillen Family Farms
RCIS
Redstar
Self-Employed
Sunderman Feedlot
The Agronomic Consulting Group
YMCA

Positions:

Agricultural Data Specialist
Applicator/Customer Service
Artificial Insemination Relief Tech
Assistant
Assistant Manager
Crop Claims Adjuster
Crop Consultant
Data Entry-Office
Digital Agronomy Lead
Farmhand
Farm Manager
Farmer
Farmhand/Machine Operator
Farrowing Technician
Feed Salesman/Driver
Foreman
Hired Hand
Office Assistant
Office Coordinator
Poultry Production

Sales Representative
Secretary

Agriculture - Agronomy - AAS / 12

Companies:

2x2 Ranch
AKRS Equipment
Aurora Cooperative
Critel Enterprises
Dale Becker
Deveron
Farmers Union Coop
Nutrien Ag Solutions
Nuttelman Farms
ServiTech
Tri-S Ag

Positions:

Agronomy Sales
Applicator
Crop Consultant
Crop Scout
Farmhand
Hired Hand
HVAC Helper
Precision Product Specialist
Seasonal Agricultural Technician

Agriculture - Animal Science - AAS / 10

Companies:

Cooksley Red Angus
Family Operations
Hamilton County Extension
Hy-Vee
Local Families
Michael's Cantina
Nutrient Advisors
Schwartz Farms
Seward Memorial Hospital

Positions:

4-H Program Coordinator
Animal Caretaker

Cashier/Customer Service
Childcare
Dietary
Permit Technician
Ranch Hand/Manager
Soil Sampler/Agriculture Work
Staff

Agriculture - College Transfer - AS / 13

Companies:

Kleinschmit Ag Services

Positions:

Owner

Agriculture - Diversified - AAS / 5

Companies:

DC Seed & Chemical
Family Farm
Farmers Pride
Four Acres Dairy

Positions:

Agronomy Operations
Applicator
Co-Owner
Farmhand

Agriculture - Mechanized - AAS / 2

Companies:

Timber Creek Seeds
Voichahoske Farms

Positions:

Sales
Farmhand

Agriculture - Precision - AAS / 9

Companies:

AKRS Equipment
Agrifac North America

Family Farm
Klein Farms
Naber Farms
Precision Planting
Self-Employed
Smith Farms

Positions:

Farmer
Farmhand
Head of Tech/Operations
Salesman
Service Administrator

Auto Body Repair Technology - AAS / 9

Companies:

3D Autobody
Cruise's Classic Rods
Duncan Aviation
Family Operation
J & L Collision
Levander's Automotive
Marr's Body Shop
O'Reilly Auto Parts
Renner Auto Body

Positions:

Auto Body Painter
Auto Body Technician
Automotive Refinish Technician
Paint Specialist
Retail Service Specialist
Technician/Farmhand

Automotive Light Service Technician - Certificate / 7

Companies:

Hansen Brothers Parts and Services

Positions:

Entry-Level Technician

Automotive Technology - AAS, Diploma / 27

Companies:

Behlen Manufacturing
Cargill
Family Ranch
Gene Steffy Ford
Gregg Young Chevrolet GMC
Hometown Auto
Kallweit Farms
Midway GM & Chevrolet
Norfolk Motor Company
Ritter Feedyards
Sid Dillon
Triple R Tire

Positions:

Automotive Technician
Lube Technician
Mechanic
Mechanic/Farmhand
Mechanic/Hired Hand
Mechanic/Tire Technician
Service Technician
Waste Water Management
Welder

Building Construction - AAS / 22

Companies:

Arvids Foodtown
Binswanger Glass
Bomgaars
Brett's Custom Woodworking
C2 Building Company
Chad Thiesen Construction
Diamond K Construction
Dick Clark Construction
Double S Construction
Herrick Construction
Holm Contracting
McHargue Builders
McQuay Construction
Morton Buildings
Pump Shop

Northeast Community College Graduates

Positions:

Carpenter
Construction Equipment Operator
Experienced Crewman
Glazer
Laborer
Management Trainee

Business - AAS, Diploma, Certificate / 30

Companies:

7 Brew
Amen 4 Kids
Colorado Court Reporter Remote
Eye Physicians, PC
Farmers Mutual of Nebraska
Foundation Wealth Advisors
Holiday Inn Express
Independent Childcare Provider
Madison County Bank
Menards
Nicola Drywall
Nike
Nutrient Advisors
Pinkelman Prints
Place For Paws
Right At Home
Sandhills Global
State Farm
Tristan Kuehler Construction
Wavelike Dance Centre
Western Edge

Positions:

Assistant Manager
Assistant Teacher
Claims Adjuster
Data Specialist
Front Desk
Front Desk/Director of Sales

Healthcare Recruiter
Insurance Agent
Loan Administrator
Manager
Operations Manager
Order Pick-Up & Delivery Coordinator
Owner
Owner/Groomer
Proofreader
Receptionist
Retail Associate
Sales
Senior Shift Lead
Teller

Business Administration - AA / 50

Companies:

Buffalo Wild Wings
Community Pride Care Center
Family Business
Great West Casualty
Lamar Advertising
Nebraska Public Power District
Northeast Community College
Paige Electric
South Sioux City Marriott Riverfront
The Meadows
Tyson Foods
Unit 24 Welding and Construction
Wayne State College
Weller Brothers Landscaping

Positions:

Accounts Payable
Adult Education
Administrative Assistant
Business Associate
CNA/CMA

Crew Member
Customer Relations
Enhancement Foreman
Facilities Services
Front Office Supervisor
Production
Sales Executive
Underwriting Assistant
Warehouse Worker

Criminal Justice - AA / 23

Companies:

Avera St. Anthony's Hospital
Box Butte County Jail
Ferguson Ag
Hall County Corrections
Michael Foods
Preferred Sands
Rambler Bar and Grill
University of Nebraska Lincoln
White Ranch

Positions:

Chemical Operator
Corrections Officer
Custodial
Fry Cook
Patient Care Technician
Ranch Hand
Truck Driver/Applicator
Vats Operator

Diesel Technology - AAS / 15

Companies:

AKRS
Bobcat of Omaha
Gasper Service
Hansen Brothers Parts & Service
Jerry's Service
M.E. Collins Contracting Co.
Mitchell Equipment

Nebraska Machinery Company
Pavelka Trucking
Peterbilt
Platte Valley Equipment
Theisen Construction
Truck Center Companies

Positions:

Class C Mechanic
Diesel Technician
Mechanic
Mechanic/Truck Driver
Repair/Welder/Fabricator
Service Technician
Tractor Technician
Welder

Drafting - AAS, Diploma, Certificate / 22

Companies:

HDR
Heritage Homes of Nebraska
KinnanFAB
Nucor - Vulcraft
Nucor Detailing Center
Valmont

Positions:

CAD Technician
Detailer
Drafter
Drafter/Designer

Drug and Alcohol Counseling -Certificate / 23

Companies:

Behavioral Health Services
Chadron Public Schools
Cirrus House
Compass
Heartland Counseling Services
Liberty Centre

Pender Community Hospital
Restore Rebuild Reconnect Counseling Center
Revive
Sherman County Prevention Coalition
The Well
US Cellular
Winnebago Comprehensive Healthcare System
Winnebago Comprehensive Healthcare System - The Recovery Program & Halfway House

Positions:

Administrative Assistant/ PLADC
Administrative Manager
Behavioral Health Manager
Chief Public Health Officer/ Recovery Director
Community Support Provider
Counselor
Direct Care
Intensive Family Specialist
Mental Health Community Support Worker
Paraprofessional
Program Director
Recovery Coach
Recovery Trainee
Retail Wireless Consultant
Staff/Biller
Substance Abuse & Mental Health Office Clerk

Early Childhood - AA, AAS, Certificate / 37

Companies:

Alma Public Schools
Bailey's Country Kids Childcare
Boone Beginnings

Childtime Learning Centers
Christ Lutheran Childcare
Daycare Owner
Emerson Elementary School
Everyday Adventures Childcare
ICAP - Inter-Lakes Community Action Partnership
Interim HealthCare
King's Kids Childcare and Preschool
Laugh-N-Learn Childcare
Little Bees Daycare
Little Cruiser's Daycare
Little Panther Preschool
Little Sprouts
Norfolk Regional Center
Sacred Heart Early Learning Center
Sandhills First Steps
St. John's Early Learning Center
St. Rose Catholic School
Tiny Toes Daycare
Wagner Community School
Weskota Manor Avera
Young Heart and Daycare

Positions:

Assistant Teacher
Childcare Provider
Cook
Head Infant Teacher
Head Teacher
Infant Assistant
Infant Room Teacher
Lead Infant Teacher
Mental Health Specialist
Owner
Owner/Provider
Paraprofessional
Paraprofessional Substitute
Payroll & Billing
Preschool Aide
Preschool Teacher

Northeast Community College Graduates

Provider
Teacher
Teacher (2-Year Olds)

Electrical Construction and Control - AAS / 23

Companies:

Abe's Electric
Beiermann Electric
Boyd's Electric
Brase Electrical
Brokaw Electric
Christensen Well & Irrigation
Eric Thomsen Electric
Frisch Electric
IES Commercial
Johnson Electric
JP Electric
Lingenfelter Electric
Menford Electric
Northeast Community College
Vulcraft
WF Electric
Wieseler Electric

Positions:

Apprentice Electrician
Dorm Cleaning Crew
Electrical Apprentice Electrician
Maintenance
Service Technician

Electromechanical Technology - AAS / 17

Companies:

Automated Drive Systems
BD Pharmaceutical Systems
Camaco
Continental
Continental Contitech
CU Plumbing and Digging
Engineered Controls
Model Electric

MP Global
Nebraska Public Power District
Nestle Purina
Preister Farms
Tyson Foods

Positions:

Electrical Apprentice
Electromechanical Technician
Farmhand
Global Technician
Journeyman Plumber
Level 3 Panel Builder
Maintenance Generalist
Maintenance Technician
Substation Technician

Graphic Design - AA, AAS / 9

Companies:

Abante Marketing
CROSSMARK Australia
Hy-Vee
K's Marketplace
Rival Design
Sandhills Custom Creations

Positions:

Assistant Manager
Graphic Designer
Grocery Clerk
Personal Shopper
Retail Merchandiser
Sales Representative

Health Information Management Systems - Diploma, Certificate / 12

Companies:

Bryan Health

Positions:

Medical Center

Heating, Ventilation, and Air Conditioning - AAS / 17

Companies:

Art Kathol Appliance
Capitol Heating and Air
Central Nebraska Refrigeration
Clausen Air, Heating & Cooling
Flenniken's Plumbing and Heating
Heating Connection
Hefner Ace Hardware
Howells Plumbing, Heating & Air Conditioning
JC Repair Heating and Air Conditioning
Major Refrigeration
Norfolk Air
Suter Services
Trane Technologies
Volkman's Plumbing & Heating

Positions:

Apprentice Service Technician
HVAC Apprentice
HVAC Installer
Service Technician

Horticulture and Golf Course Management - AAS, Diploma / 11

Companies:

Bayside Golf Course
The Club at Cordillera
True Ag and Turf

Positions:

Assistant In Training
Irrigation Technician
Parts Specialist

Information Technology - AA, AAS, Certificate / 42

Companies:

Divots Norfolk Lodge and Suites
Dollar General
Engineered Controls
Farmers National Company
Franciscan Healthcare
Fuchs Family Farm
Hy-Vee
Infosys
Lutz
Midwest Bank
Norfolk Iron & Metal
Stealth Broadband
Target

Positions:

Associate
Cashier
Courtesy Clerk
Farmhand - Cow/Calf
Helpdesk Apprenticeship
Helpdesk Technician
It Helpdesk Support
It Intern
Junior Software Developer
Retail Associate
Sales Clerk
Systems Engineer
Tech Consultant

Machining and Manufacturing Automation - Diploma, Certificate / 1

Companies:

ContiTech

Positions:

Operator

Media Arts - AAS, Certificate / 19

Companies:

Encore
Freelance
Frippery Band
Hy-Vee
Nebraska Department of Transportation
Northeast Community College
Self-Employed
Social Media Platforms

Positions:

Band Leader
Freelance Audio Engineer
Highway Maintenance Worker
Meat Clerk
Motivational Speaker
Music Producer & Audio Engineer
Social Media Intern
Technician

Nursing - Associate Degree In Nursing / 32

Companies:

Avera McKennan Hospital
Avera St. Anthony's Hospital
Belton Regional Medical Center
Brookstone Acres
Bryan Health
Butler County Health
CHI Health
CHI Health Creighton University
CHI Health Schuyler
CHI St. Francis Hospital
Columbus Community Hospital
Faith Regional Health Services
Fillmore County Hospital

Fountain Point Surgery Center
Franciscan Healthcare
HCA LewisGale Hospital
Montgomery
Heritage of Bel-Air
Osmond Community Hospital
Providence Medical Center
Right at Home
Trinity Health
Wisner Care Center

Positions:

RN

Nursing - Practical Nursing - Diploma / 39

Companies:

Faith Regional Health Services
St. Joseph's Rehabilitation Care Center & Rehab

Positions:

LPN

Paramedic - AAS, Diploma / 10

Companies:

Columbus Nebraska Fire Department
Hoeft Farms
Faith Regional Health Services
Hadar Fire & Rescue
Hartington Ambulance
Newman Grove Fire and Rescue
South Sioux City Fire Department
Wayne Volunteer Fire Department

Positions:

Captain/EMT
EMT
Firefighter/EMT

Northeast Community College Graduates

ICU Nurse
Paramedic

Physical Therapist Assistant - AAS / 6

Companies:

Family Physical Therapy & Sports Center
GO Physical Therapy
Premier Physical Therapy
RehabVisions
Southwest NE Physical Therapy

Positions:

Physical Therapist Assistant

Plumbing Technology - Diploma / 9

Companies:

Complete Floors
Jeannotot Plumbing
Jones Plumbing & Heating
Kevin's Plumbing
Preferred Plumbing
Ruppert Plumbing
Trane

Positions:

Apprentice Plumber
HVAC Technician
Laborer
Plumber

Utility Line - AAS / 32

Companies:

Auburn Board of Public Works
Bridge Street Transport
Brink Constructors
City of Central City
City of Ord Electric
City of Schuyler
City of Seward Electric
City of West Point

Cornhusker Public Power District
Dawson Public Power District
Elkhorn Rural Public Power District
Feedlot

Harrison County Rural Electric Cooperative
Highline Construction
Howard Greeley Rural Public Power District
McCook Public Power District
Nebraska Public Power District
Northeast Public Power District
Omaha Public Power District
Polk County Rural Public Power District
Pema-Panhandle Rural Electric Membership Association
South Central Public Power District
Southeastern Electric Cooperative
Southern Public Power District
Town of Wheatland
Twin Valleys Public Power District
Village of Ansley

Positions:

Apprentice Lineman
Laborer
Power Lines Construction
Truck Driver
Utility Assistant
Utility Line Technician
Utility Lineman

Veterinary Technology - AAS / 9

Companies:

Central City Vet Clinic
Countryside Veterinary Clinic
Gavins Point Vet
Madison County Veterinary Clinic
Nebraska Vet Services
South Sioux Animal Hospital
Twin Rivers Veterinary Clinic
University of Nebraska at Lincoln
Urgent Pet Care

Positions:

Microbiology Research Technician
Veterinary Technician

Welding - Certificate, Diploma / 35

Companies:

Apache
BD Contractors
Bernhardt Welding and Repair
Cyclonaire Corporation
Exmark
Family Farm
LB Welding
Boilermakers Local 83
Main Stop
Masaba
MP Contractors
Norfolk Iron & Metal
Pfister Wrecker Service and Repair
Schlueters Fabrication & Machine
Self-Employed
Sioux City Machine and Fabrication
Smeal Fire Apparatus

Thiessen Welding
TK Enterprises
Underwood Farms

Positions:

Boilermaker
Cashier/Cook
Fabricator
Farmhand/Light Welding
Hired Hand/Welder
Metal Worker
Operator/Welder
Welder
Welder/Fabricator
Welder/Maintenance

Wind Energy Technology - AAS, Diploma / 8

Companies:

Invenergy
NextEra Energy
SGRE - Siemens Gamesa Renewable Energy
Takkion/Renew

Positions:

Service Technician
Traveling Wind Technician
Wind Technician

General - AA, AS / 223

Companies:

Arbor Care Center
Brockhaus Funeral Home
Buffalo Wild Wings
Calhoun County Public Health
Cedar Bluffs Public School
Cedar County Sheriff's Office
Christ Lutheran Childcare
Columbus Family Dental
Community Pride Care Center
Daylight Donuts
Family Farm

Farm Bureau Financial Services
Fremont Public Schools - Washington Elementary
Great West Casualty Company
Harrah's Casino
Heritage of Bel-Air
Independent Provider-DHHS
Kamp Kaleo
Law Enforcement Center
Leonard Management
Local Family
Madison County Jail
Menards
Norfolk Veterans Home
Northeast Community College
Pender Community Hospital
Ponca Public Schools
Ponca Tribe
Retailer
Scooter's Coffee
Sioux City Apostolic Youth Group
South Sioux City Middle School
Starbucks
The Heritage at Fountain Point
Westside Family Pet Clinic
Wisner Care Center

Positions:

Barista
Bartender
Caregiver
Childcare
Claims Support Specialist
CMA
CNA
CNA/CMA
CNA/Home Care
Cook
Co-Owner
Correctional Officer
Customer Service

Dispatcher/Jailer
Family Business
Family Coordinator
Financial Services Support
Funeral Director Assistant
Head Cashier
Law Enforcement Staff
Nanny
Office Administrator
Office Manager
Paraprofessional
Parent Educator/Home Visitor
Shift Manager
Special Education Paraprofessional
Veterinary Aide
Wind Energy Instructor
Youth Leader



NORTHEAST COMMUNITY COLLEGE

801 East Benjamin Avenue
Norfolk, Nebraska 68701
(402) 371-2020

Extended Campus Locations:
O'Neill, South Sioux City, and
West Point

NORTHEAST.EDU