

# This Home at Auction

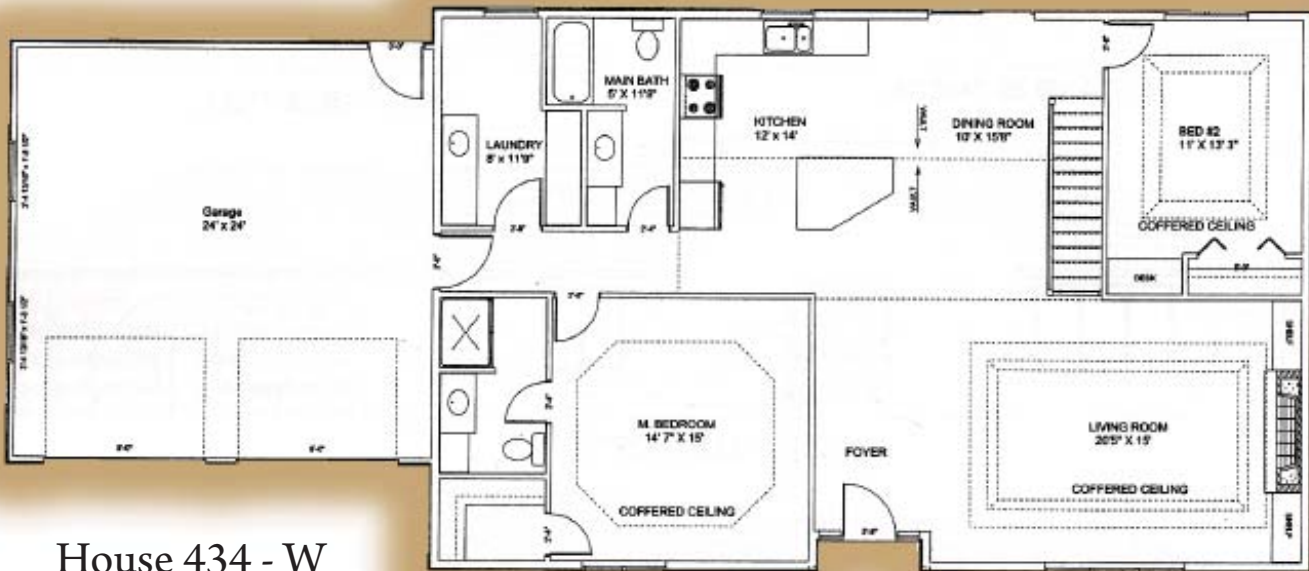
Saturday, June 6, 2009 • 10:00 a.m.

Northeast Community College Campus • 801 East Benjamin Avenue



PUBLIC OPEN HOUSE • Tuesday, May 26 and  
Thursday, May 28 • 7:00 - 9:00 p.m.

**Northeast**  
community college



## House 434 - W 1550 Sq. Ft.

This home was designed and built by Northeast Community College Students. Floor coverings are the responsibility of homeowner, except where noted. Special features in this open floor plan include:

- Fiber cement siding
- 30 year shingles
- R-21 sidewalls and R-44 attic cellulose insulation
- Coffered ceilings
- Laminate flooring in entryway, kitchen, and dining room
- Ferche' oak millwork stained to match the built-in, custom cabinetry
- Anderson Casement Windows

For more information or to schedule a tour, call (402) 844-7215 or (800) 348-9033, ext 7215

Homes are designed to be moved at buyer's expense to own lot. Both houses include all water, vent and waste lines extended to floor joist level for ease of hook-up. 2x6 exterior stud walls with cellulose insulation throughout. Houses meet or exceed local and state building codes. All electrical conveniences installed in accordance with national electric and FHA code; circuits tested and connected to a 200 amp breaker panel.

# This Home at Auction

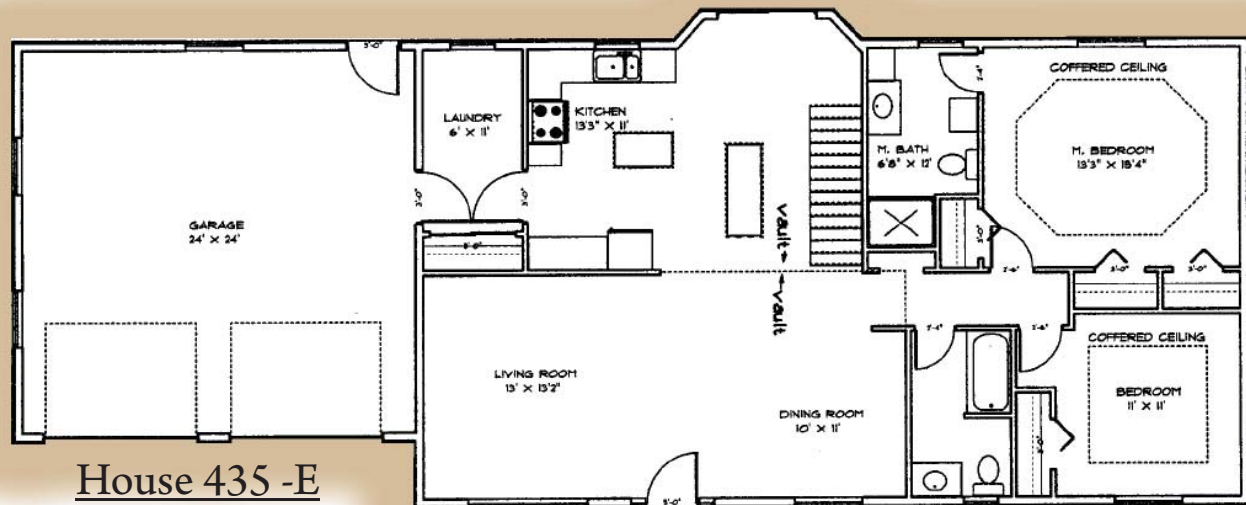
Saturday, June 6, 2009 • 10:00 a.m.

Northeast Community College Campus • 801 East Benjamin Avenue



PUBLIC OPEN HOUSE • Tuesday, May 26 and  
Thursday, May 28 • 7:00 - 9:00 p.m.

**Northeast**  
community college



House 435 -E  
1500 Sq. Ft.

This home was designed and built by Northeast Community College Students. Floor coverings are the responsibility of homeowner, except where noted. Special features in this open floor plan include:

- Fiber cement siding
- 30 year shingles
- R-21 sidewalls and R-44 attic cellulose insulation
- Vaulted ceilings
- Laminate flooring in entryway, kitchen, and dining room
- Ferche' oak millwork stained to match the built-in, custom cabinetry
- Anderson Casement Windows LoE insulated glass with argon gas

For more information or to schedule a tour, call (402) 844-7215 or (800) 348-9033, ext 7215

Homes are designed to be moved at buyer's expense to own lot. Both houses include all water, vent and waste lines extended to floor joist level for ease of hook-up. 2x6 exterior stud walls with cellulose insulation throughout. Houses meet or exceed local and state building codes. All electrical conveniences installed in accordance with national electric and FHA code; circuits tested and connected to a 200 amp breaker panel.